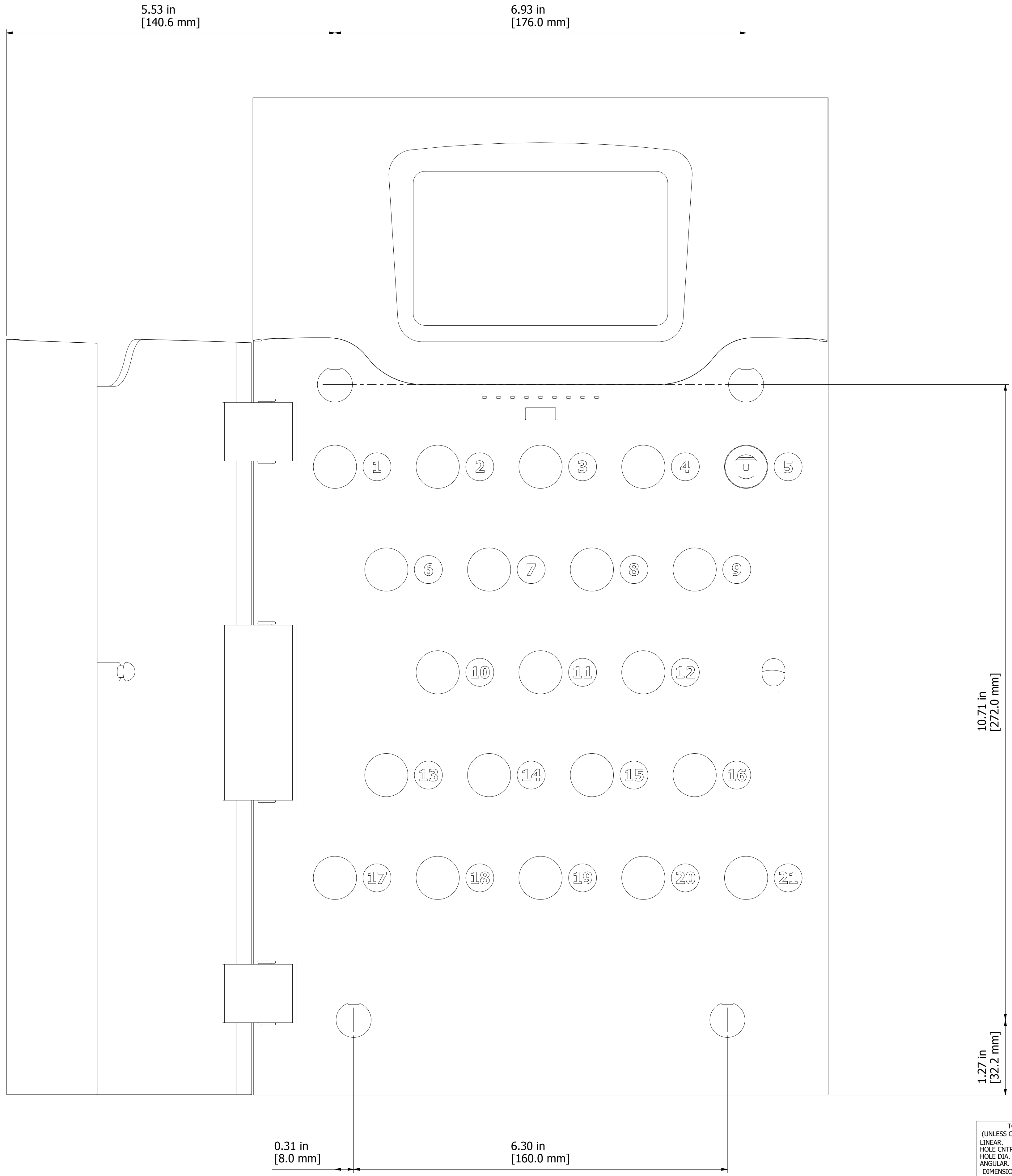


PRINT THIS PAGE TO A1 TO USE AS DRILLING GUIDE



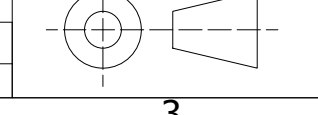
- NOTES:**
1. SHEET 1 TO BE USED AS A1 SHEET SIZE FOR DRILLING PURPOSES
 2. SHEET 2 TO BE USED AS A3 SHEET SIZE FOR DRILLING PURPOSES
 3. THE SECOND SHEET SHOWS THE DRILLING POSITIONS AND CABINET HOWEVER DOES NOT FIT ON AN A3 SHEET SO THE TOP SECTION OF THE CABINET HAS BEEN REMOVED.
 4. ENSURE ANY PRINTED SHEETS ARE SET TO 'ACTUAL SIZE' WHEN PRINTING TO AVOID ANY SCALING ISSUES

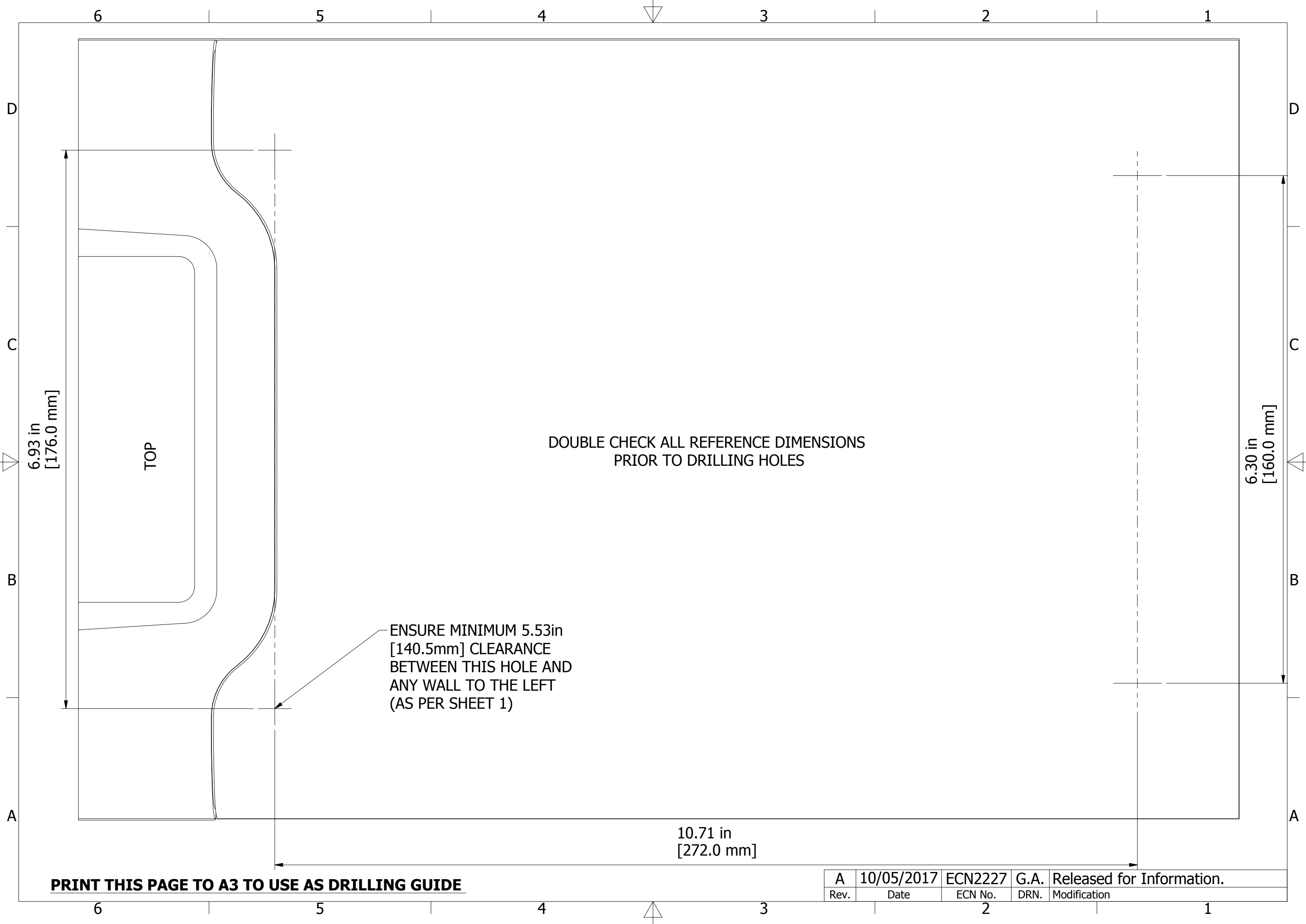
A	10/05/2017	ECN2227	G.A. Released for Information.
Rev.	Date	ECN No.	DRN. Modification

TOLERANCES (UNLESS OTHERWISE STATED)		THIS DRAWING IS THE SUBJECT OF COPYRIGHT AND MUST NOT BE COPIED OR OTHERWISE REPRODUCED EITHER IN WHOLE OR IN PART WITHOUT THE EXPRESS WRITTEN PERMISSION OF TRAKA.	
LINEAR:	±0.25mm	DATE:	10/05/2017
HOLE CNTRS.	±0.1mm	MATERIAL:	N/A
HOLE DIA.	±0.1mm	FINISH:	N/A
ANGULAR:	±0.5°	SCALE:	1 : 1
DIMENSIONS IN MILLIMETRES UNLESS SPECIFIED OTHERWISE.		DRN: Gareth Auckland	

MASS:	2.879 kg	DESCRIPTION:	Traka 21 Drilling Guide
-------	----------	--------------	-------------------------

traka	
ASSA ABLOY	
TRAKA 30 STILBROOK ROAD, OLNEY, MK46 5EA, TEL : 01234 712345	
Traka Stock No.	As Part No. A1
Part No.	ID-1-0085
SHEET 1 OF 2	Rev. A





PRINT THIS PAGE TO A3 TO USE AS DRILLING GUIDE

A	10/05/2017	ECN2227	G.A.	Released for Information.
Rev.	Date	ECN No.	DRN.	Modification